

Competitive tool

HP innovation delivers significant advantages over Canon



HP Color LaserJet Pro M476 series vs. Canon imageCLASS MF8580CDW



HP Color LaserJet Pro M476nw/dn/dw

Up to 21 pages per minute (ppm) black-and-white/color (letter)¹



Canon imageCLASS MF8580CDW

Up to 21 ppm black-and-white/color (letter)²

Surpass your printing and imaging expectations with the impressive performance, comprehensive mobility, energy-saving features, and advanced ease of use that the HP Color LaserJet Pro MFP M476 series provides over the Canon imageCLASS MF8580CDW.²

Do more with comprehensive mobile printing

The HP Color LaserJet Pro MFP M475 series is the current top selling color MFP of up to 21 pages per minute¹ or higher in the world.³ The M476 series represents an upgrade to this device with an even better feature set and more functionality. This MFP is the world's first Mopria-certified⁴ printer and offers embedded HP NFC touch-to-print⁵ and wireless direct⁶ functionality.

Only HP provides a unified solution for mobile printing that does not require third-party software or additional service fees⁷ to print from virtually anywhere, anytime. Only HP supports native in-OS print drivers for each major operating system, including Apple AirPrint™, Android™, and Windows® Phone 8. Canon only supports AirPrint.² Using HP's ePrint app makes printing from any mobile device a breeze. The app prints to both local printers and remote HP ePrint-configured printers, while offering direct access to public cloud storage and email services, public print locations, and can even integrate with HP ePrint Enterprise services.⁸ Canon's free Mobile Printing app is limited to photos and web pages and can only print to devices on a local network.²

Does the device support...²

	HP	Canon
NFC-enabled touch to print solutions? ⁵	✓ (M476dw bundle)	⊗
Direct Wi-Fi printing to send jobs directly to the printer without accessing the local network? ⁶	✓	⊗
An intuitive mobile print experience that lets users hit print right from their supported apps?	✓	⊗
Free remote, cloud-based printing?	✓	⊗
A print control app that prints and scans?	✓	⊗
Apps that seamlessly print documents from popular cloud repositories such as Box, Dropbox, and Evernote? ⁸	✓	⊗

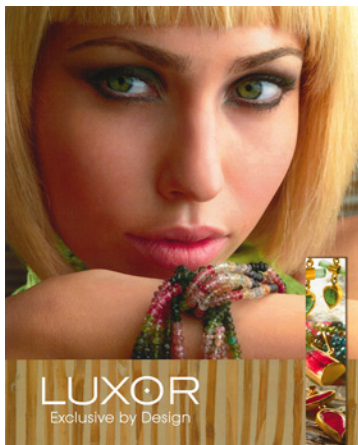


Business-Class Printers New to the Line

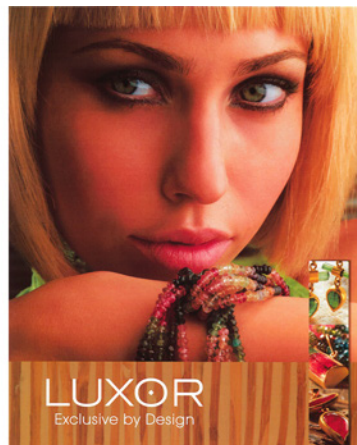
Winner of the BLI Outstanding Color
Printer/MFP Line of the Year—four years in
a row⁹

Expect outstanding print quality every time you print

HP's competitively priced ColorSphere toner gives customers consistent, affordable and professional print quality from the first page to the last without having to outsource print jobs. In fact, the predecessor of the M476 series (the HP Color LaserJet Pro MFP M475) was included in the prestigious Buyers Laboratory (BLI) Color Line of the Year award for 2013 and 2014. The M476 retains this same excellence with even better features and functionality.

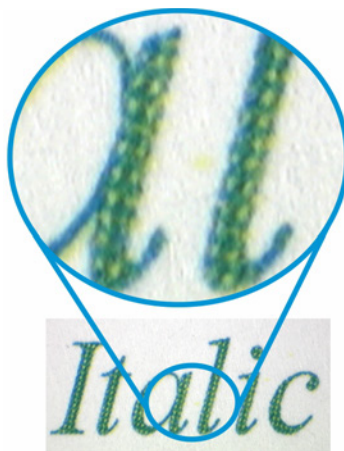


HP Color LaserJet Pro M476¹⁰



Canon imageCLASS MF8580CDW¹⁰

HP's ImageREt technology provides exceptional print quality right out of the box—with no need to change settings. The Canon device requires users to access the print driver and adjust settings for top-quality prints. HP delivers vibrant and uniform colors, smooth gradients, and distinct line-art and text for brilliant images. The examples (above) show Canon's output displays inferior color registration with poor skin tones.¹⁰ The close-up of text output from the HP device (below) shows crisper edges and overprinting, while the Canon device's text is poorly rendered.¹⁰



HP Color LaserJet Pro M476¹⁰



Canon imageCLASS MF8580CDW¹⁰

Experience exceptional ease of use with less intervention

At HP, we design our products with the end user in mind. All-in-one cartridges and minimal consumables mean fewer user interventions are required. Automated internal cleaning mechanisms free users from tedious cleaning jobs within the device. A touchscreen control panel provides easy navigation of the simple and intuitive interface.

Easy-to-use touchscreen



Entering text for scan destinations, such as emails or folders, is easy using the HP M476’s touchscreen.⁸ Plus, print preview on the control panel allows users to view JPG images before printing from a walk-up USB flash drive to easily select images and avoid printing incorrect documents. Canon’s interface consists of a 7-line LCD with a numerical keypad, requiring users to spend more time scrolling through menus to change settings. In addition, Canon requires users to find letters by moving a cursor with arrow keys or by repeated tapping on the keypad.

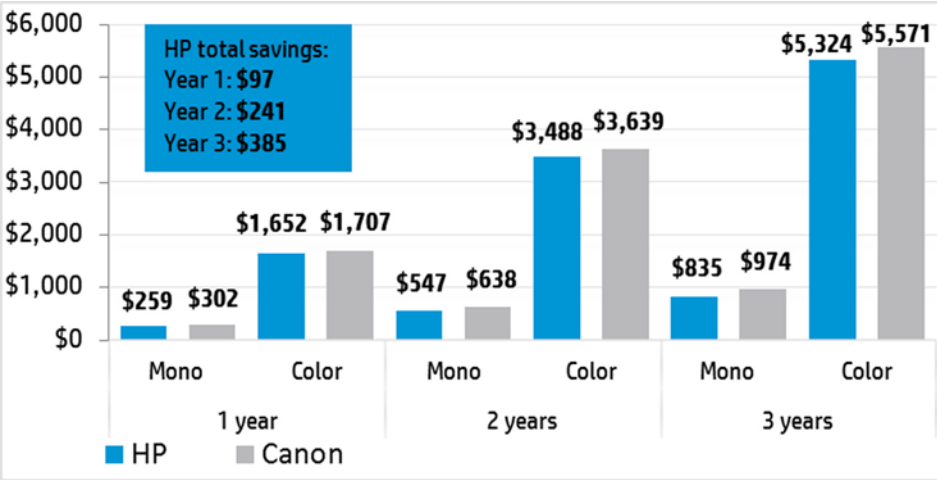
Increase productivity and help save money

Users want more from their MFP than ever before, and HP delivers. Web connectivity allows you to print from and scan to the cloud, while business apps⁸ enable you to automatically print customized information directly from the web. HP’s business apps provide web-based features that Canon cannot support.²

Dual-head scanning, featured on the HP M476, helps increase productivity and reduces wait times. This feature scans both sides of a page in one pass, doubling the speed of two-sided scanning jobs. The Canon device does not offer single-pass, dual-head scanning.²

HP all-in-one toner cartridges deliver great long-term value to help reduce costs. Over the course of 3 years, HP customers will see significant savings on toner compared to Canon customers.

Comparison of toner prices over 3 years¹¹



Save time and control costs with industry-leading fleet management and color access settings

Whether you have a large company with a growing printer fleet or a small firm with devices in regional offices, HP provides a suite of fleet-management tools with administration features that

lets you configure and upgrade on your schedule. In fact, HP Web Jetadmin¹² is the most comprehensive fleet management tool among tested competitors.¹³ HP Web Jetadmin outperforms Canon's imageWARE Enterprise Management Console 3.2 in several key areas.¹³

Does the vendor's management solution... ¹³	HP	Canon
Discover and manage devices directly connected to PCs?	✓	⊗
Configure unlike devices?	✓	⊗
Securely erase disks in a manner that helps meet Department of Defense standards?	✓	⊗
Report usage information by user or group?	✓	⊗
Offer automated consumables ordering?	✓	⊗
Offer trend reporting for daily, weekly, monthly, quarterly, or other date structures?	✓	⊗

Avoid management headaches and help reduce associated costs of multiple print drivers with the HP Universal Print Driver for Windows,¹⁴ which can help you slash driver certification, management, and support costs. This single, versatile fleet driver solution provides both traditional and mobile workers with a consistent, secure, and centralized user experience in 35 languages.

Promote cost savings by regulating color printing with HP's comprehensive color access controls. From a device's embedded web server or HP Web Jetadmin,¹² administrators can set color restrictions by user, group, or application, or disallow color output completely until it's needed for special projects.

Can the vendor's color access control solution... ¹⁵	HP	Canon
Restrict color by application?	✓	⊗
Completely disable color via the user interface?	✓	⊗
Completely disable color via the embedded web server?	✓	⊗
Set color quantity limits by specific groups?	✓	⊗

Reduce energy use—HP technology helps makes it easy

The HP Color LaserJet Pro M476 series includes HP's Instant-on Technology, which uses a ceramic fuser to heat up rapidly, helping to cut energy use (62 KWh/year).¹⁶ With HP Auto-On/Auto-Off Technology,¹⁷ the device can be set to automatically turn off when not in use and turn on when needed. And the device consumes less than 1.5 watts of energy when in off mode, yet will wake on events such as USB print and print jobs sent over the local network. The M476dn and M476dw models are ENERGY STAR® qualified.

Depend on legendary HP reliability

HP products incorporate the latest innovations that simplify the user experience, offer energy-saving designs, and produce professional-quality documents. An HP fleet can offer sound investment protection that can help benefit your bottom line.

With large monthly duty cycles, HP LaserJet printers and MFPs are built to keep intervention rates low so you can stay productive. Prior to its introduction, a new HP LaserJet device undergoes rigorous HP testing. Tests are performed with a large sample of devices through each step of the design process, to be certain that the device measures up to HP standards. The result is a solid, reliable product that produces excellent output quality over the life of the device and its supplies.

Gain the advantage with HP

Drive business growth with comprehensive mobile printing options, outstanding energy efficiency, user-friendly features like a touchscreen display, less intervention and no consumables except toner cartridges, and robust printing capabilities on a variety of media, including two-sided marketing media—only on the HP device.

Notes

- ¹ Measured using ISO/IEC 24734, excludes first set of test documents. For more information see hp.com/go/printerclaims. Exact speed varies depending on the system configuration, software application, driver, and document complexity.
- ² Based on the manufacturer's published product specifications.
- ³ Based on units shipped worldwide as of December 31, 2013 reported by IDC.
- ⁴ Mopria is a mobile printing standard that enables easy mobile printing between Mopria-certified printers and mobile device—without the need for a special app or software. Learn more at mopria.org. Mopria-certified HP printer and mobile device must be connected to the same wireless network or have a direct wireless connection. Performance is dependent on physical environment and distance from the wireless access point. Wireless operations are compatible with 2.4 GHz routers only.
- ⁵ Touch-to-print capability is available only on the HP Color LaserJet Pro MFP M476dw. Mobile device must support near field communications-enabled printing. For a list of supported devices, see hp.com/go/businessmobileprinting.
- ⁶ Wireless direct printing is available only on the HP Color LaserJet Pro MFP M476nw and M476dw. Mobile device needs to be connected directly to the Wi-Fi network of a wireless direct capable printer prior to printing. Depending on mobile device, an app or driver may also be required. Wireless performance is dependent on physical environment and distance from the access point in the printer.
- ⁷ Excludes standard mobile fees for services through your mobile service provider.
- ⁸ Requires an Internet connection to the printer. Services may require registration. App availability varies by country, language, and agreements. For details, see hpconnected.com.
- ⁹ Sources: "BLI Winter 2013 Pick Award, Hewlett-Packard Company, Outstanding Color Printer/MFP Line of the Year" and "BLI Winter 2014 Pick Award, Hewlett-Packard Company, Outstanding Color Printer/MFP Line of the Year." Copyright 2013 and 2014 Buyers Laboratory LLC. For more information, visit buyerslab.com.
- ¹⁰ Print quality samples were obtained by HP internal testing using the manufacturer's recommended best print-quality setting for 20 lb plain paper media in March 2014. Scanned images of print samples contained in this document may not reproduce accurately when printed.
- ¹¹ Savings and pricing based on an average print volume of 2,000 pages per month, with equal volumes of mono and color prints. Average CPP was reported by Gap Intelligence January 13, 2014.
- ¹² HP Web Jetadmin is free and can be downloaded at hp.com/go/webjetadmin.
- ¹³ Based on manufacturers' published product specifications and internal HP analysis of leading printer manufacturers' network device management solutions as of December 2013.
- ¹⁴ The HP Universal Print Driver is free and can be downloaded at hp.com/go/upd.
- ¹⁵ Based on specifications for hardware and software offerings from each vendor listed as of December 2013. The color access controls covered for each vendor include device-specific capabilities like enabling settings from the embedded Web server and device control panel, fleet management utility, and a combination of product-specific and universal print drivers. In terms of device-specific capabilities, some capabilities indicated may not apply to older or discontinued devices.
- ¹⁶ HP results based on internal testing using ENERGY STAR® Typical Electricity Consumption (TEC) methodology. Competitive data obtained from energystar.gov in January 2014. All data based on 115V and extended to 1 year. Testing was conducted on a single unit of each product. Actual usage/rate may vary. Instant-on Technology claim based on comparison with products that use traditional fusing.
- ¹⁷ HP Auto-On/Auto-Off Technology capabilities subject to printer and settings; may require a firmware upgrade.

Sign up for updates

hp.com/go/getupdated



Share with colleagues

© Copyright 2014 Hewlett-Packard Development Company, L.P. The information contained herein is subject to change without notice. The only warranties for HP products and services are set forth in the express warranty statements accompanying such products and services. Nothing herein should be construed as constituting an additional warranty. HP shall not be liable for technical or editorial errors or omissions contained herein.

AirPrint and the AirPrint logo are trademarks of Apple Inc. Android and Google are trademarks of Google Inc. ENERGY STAR and the ENERGY STAR mark are registered U.S. marks. Windows is a U.S. registered trademark of Microsoft Corporation.

